



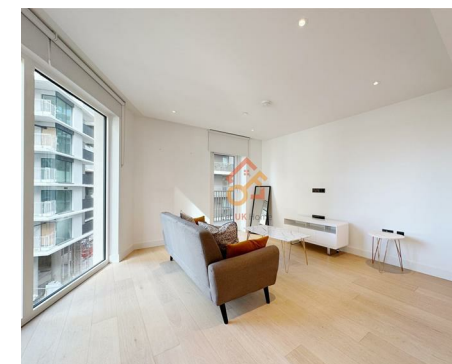
Let **UK** Home

1 Bedrooms

Flat

Located in London

**£3,050 Per Month**



[info@letukhome.co.uk](mailto:info@letukhome.co.uk)

<https://www.letukhome.co.uk/>

01795 358 886



# Fountain Park Way London

W12 7HZ



Let UK Home are excited to offer this spectacular one bedroom apartment in the heart of Bowery Apartments part of the White City Living.

The flat comprises a spacious open kitchen with a stylishly attached dining area, a magnificent living room, one bright bedroom with wardrobe and one modern bathroom. A virtual viewing is provided.

Residents of this exceptional development will have exclusive use of indoor swimming pool, gymnasium, two 12-seater cinemas, private dining room, residents lounge and rooftop bar. Additionally, residents of this exceptional development will benefit from a concierge and an unrivalled selection of shops, bars, restaurants, leisure facilities and beautiful landscaped courtyards.

In addition to the two tube stations (White City and Wood Lane) within easy reach, there are multiple bus links providing easy access to international transportation hubs. Central London is easily accessible.

White City Living is in close proximity to many of London's top schools and colleges. Imperial College is just a short walk away, as is the Royal College of Art RCA White City Campus, and University College London (UCL), London School of Economics and Political Science (LSE) and King's College London are all within a short commute.

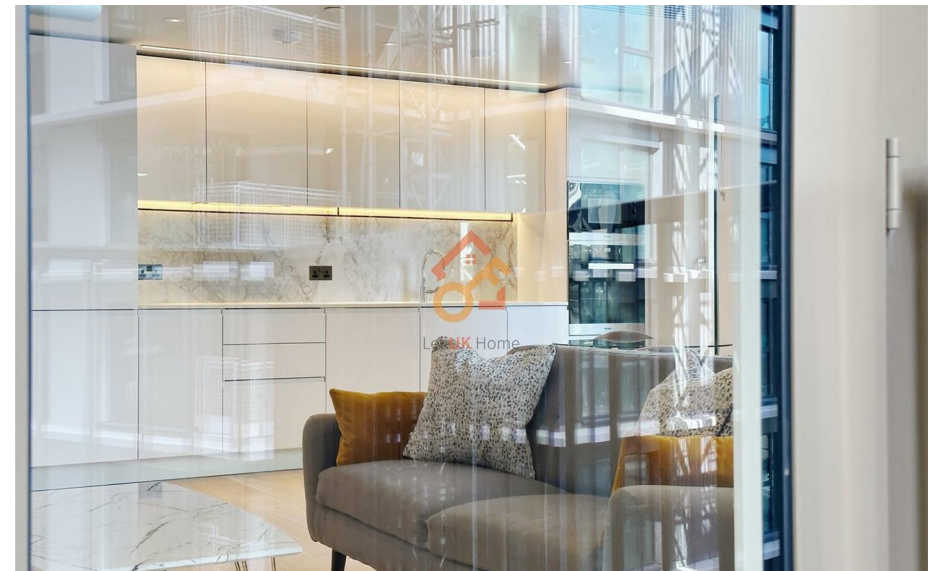
Westfield shopping center is located next to the development, TELEVISIONCENTRE (hotel, Soho House private members club and Bluebird

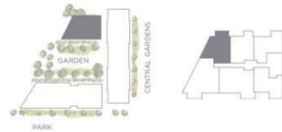
# Fountain Park Way London

## £3,050 Per Month



- 3rd Floor
- Concierge Service
- The Spa
- Cinema & Game Room
- Virtual Viewing Available
- 24h Security
- Swimming Pool
- Residents Lounge
- The Gym
- EPC Rating: B





Internal measurements	52.9 m <sup>2</sup>	569 sq ft
External measurements	5.9 m <sup>2</sup>	63.5 sq ft
Kitchen / Living / Dining	6.12 x 5.07 m	20 ft 0" x 16 ft 7"
Bedroom 1	3.96 x 2.80 m	12 ft 11" x 9 ft 2"
Balcony	4.01 x 1.47 m	13 ft 1" x 4 ft 10"

PLOTS A0204, A0304, A0404, A0504, A0604, A0704, A0804, A0904, A1004, A1104



Let **UK** Home

3F 2 Eastbourne Terrace  
Paddington  
London  
W2 6LG

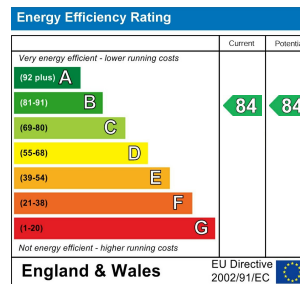
01795 358 886

info@letukhome.co.uk

**Council Tax Band: E**

**Local Authority:**

Agents Note: Whilst every care has been taken to prepare these particulars, they are for guidance purposes only. All measurements are approximate and are for general guidance purposes only and whilst every care has been taken to ensure their accuracy, they should not be relied upon and potential buyers/tenants are advised to recheck the measurements.



<https://www.letukhome.co.uk/>